



**AIA**  
Richmond

# THE PEDESTAL

## 2021 Q2 Newsletter

Welcome to the newsletter for the Richmond, Virginia Chapter of the American Institute of Architects. Our chapter is based in the Greater Richmond area and represents over 60 firms with over 400 members.

Visit our NEW website at <http://aiarva.org/>

## TABLE OF CONTENTS

2	Featured Sponsor: Shade and Wise Brick
4	..... Featured Member: Susan Reed
5	..... Featured Project: VCU College of Engineering
7	..... Sporting Clay Event
8	..... Member News
10	..... Board of Directors

Photo: Michael A.L. Poole  
JMU Student



# PLATINUM SPONSOR



Shade and Wise has evolved in the construction industry from the time when Louis Shade and Frank Wise Sr. left Massey Building Supply and formed in 1946 as Builders Supply and Specialty Corporation of Richmond, the company sold construction materials such as plaster, masonry mortar and tar. In 1970, Jack Frayser, Sr. purchased Shade & Wise from Louis Wise and started the evolution into leading masonry supply company of today. For many years, S&W was located on Tomlyn Street, and in 1997 moved to its current location on Dabney Road with an expansion to Powhatan in 2007.

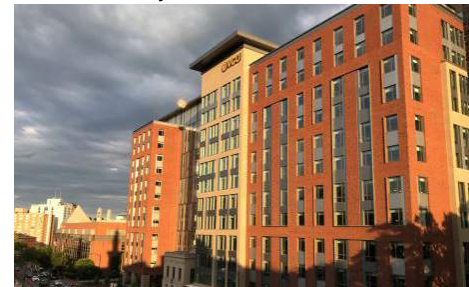
Over the years, S&W has been a leader in customer service in our industry. Our company owns a fleet of delivery trucks and staffed with our drivers. Our delivery process has evolved into a “place it as close to the masons hand as possible” has made our drivers experts and a valuable resource to both residential and commercial contractors. Our staff, both inside and outside sales are all Certified Brick Specialists and are a valuable resource to all who come to our offices. Professional and courteous customer service people who are well versed in color, texture and availability is what our company strives to provide. We pride ourselves in being “fair and honest in our pricing” and our business practices. S&W was honored by Henrico County in 2016 as one of the longest running business based in their county.

In our support to the statewide architecture community, our entire staff are Certified Brick Specialist through the auspices of The Brick Industry Association. Our architectural staff supports not only the local Richmond architectural community, but also AIA Virginia through educational programs that contribute to the continuing education requirements by DPOR. The programs, on various essential masonry design elements provide insight to the attendee on multiple facets of detailing all styles of masonry construction. Our brick specialists are trained to identify problems and assist in solutions that will help the designer, mason, contractor and owner with issues that may arise. These educational programs, which have been taught statewide, have provided insight to and aided in the design that has changed the look in many areas of the Commonwealth. Our representatives are contacted frequently to help aid in the design of projects statewide, both new and historic renovations. Through our involvement in The Brick Industry Association, our Architectural Sales division has become the lead resource in Central Virginia. Our ASD regularly schedules seminars in architectural firms for continuing education. These programs are a resource for the design community as well as engineers and contractors to understanding the proper use, specification and engineering of a masonry structure. These seminars cover a multitude of topics and are a resource for the design community using the BIA Technical notes as a guide.

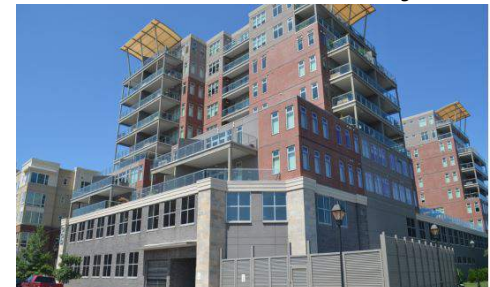
*University of Richmond; Architect: SMBW*



*VCU; Architect: Ayers-Saint Gross*



*800 Semmes Richmond; Architect: APEX Design LLC*



S&W leads the way in education seminars throughout Virginia. Our team has not only developed presentations for use in Virginia, but also shares them with the BIA for national use. The research and information contained in these developed presentations have aided in changing specifications in masonry design. Shade and Wise has also participated in AIA VA's ArchEx over the past ten years. We have conducted seminars, large booth presentations, discussions and live demonstrations over the years. Our willingness to assist and find the right product has had attendees seek us out at ArchEx to discuss their designs and thoughts. We have brought other manufacturers in the masonry world to become participants in ArchEx to expand on the masonry selections and knowledge base

## PLATINUM SPONSOR



at the product display area.

Our architectural masonry staff has aided in the development with several brick manufacturers of brick products for new colors and textures. S&W staff has been instrumental in teaching and researching water mitigation from masonry and controlling movement. Through our lunch & learn programs we reinforced the use of a “slip plane” and “good masonry practices” to relieve the issues with water problems in masonry walls. We have also worked with firms to address the common problems with masonry and the solutions that have been incorporated into many masonry envelopes throughout our Commonwealth. One project in particular was a very difficult match in Henrico County, in which S&W worked with the manufacturer to match and name the brick for Henrico. We have also worked with several cultured stone companies to develop a “Hokie Stone Clone” with some success.

We feel that our business practices are the best advertising. Our company prides itself on the fact that we are only advertised through word of mouth and that has been our most successful form of advertising. When you treat a customer well, they are the best advertisement any company could ask for. We are family owned and family centered with our employees, which sets us apart from our competition. The owners sit at the same lunch table as the sales person, the yard employee or the truck driver and listens to how we can all make this better for not only ourselves but the customer as well. Our base of operations may be Richmond or Powhatan, however; our reach is state and occasionally nationwide. We have aided in the specifications for projects as far away as Puerto Rico, Key West and California and assisted firms designing for projects in Richmond from out of town. The employees of Shade and Wise are here to help provide solutions in masonry problems and support the architecture and construction community.

With the support of Shade & Wise, their Senior Architectural Representative Robert W. Vaughn - Hon AIA-R, was able to join the AIA Richmond Board of Directors as the Allied Member voice. One of the most important initiatives that impacts the statewide efforts is the formation of The Scholarship Program of AIA Richmond. Robert along with other Board members, spearheaded the formation, implementation and fund raising efforts to establish the program. The Allied Members worked diligently to start the AIA Richmond Sporting Clays Challenge, of which has been held three years in a row. Highly successful, this event has raised over \$8000 in funds that support not only the Scholarship program but also the K-12 Committee to introduce students to the practice of Architecture. Shade & Wise is also the title sponsor of the AIA Richmond Golf Tournament. Their employees work a hospitality area on one of the tee boxes and provide a “refreshing beverage” to the players. With this support, the players have the



*River City Roll; Architect: PSH+*



opportunity to network at a lower cost due the financial support of Shade & Wise. Committee involvement plays a vital role in the planning and execution of the program, of which James Tavenner, VP-Sales has supported those efforts for years. Another committee that enjoys our support is YAF, of which Architectural Representative Tyler Currie is a member. His assistance with planning and implementation of programs and our support provides the necessary voice of an Allied Member in this vital and growing committee. Tyler's efforts have helped boost the exposure of Shade & Wise to the younger design community and with that support will continue the growth of architecture in Virginia.



# FEATURED MEMBER

*Susan Reed, AIA,  
Director of Historic Preservation,  
Glavé & Holmes Architecture*

**1.) What age were you when you knew you wanted to be an architect?**

After falling in love with Art and Architecture in Florence when I was 18, I decided I wanted to be a painting conservator and majored in Art History (with a Minor in Architectural History). It wasn't until I was 27 that I decided to get my Masters in Architecture with the intent of restoring buildings.

**2.) What architect would you like to take to dinner?**

I'd like to pick up Carlo Scarpa on the way to dinner at Eileen Gray's house.

**3.) Where is the first place you want to travel (or have you already traveled) since the pandemic?**

Venice - before it gets too crowded again!

**4.) What is the most important thing you've learned in the last year?**

How fortunate I was to have had such a great Dad who taught me gratitude and how to put things together.

**5.) Where did you study architecture?**

University of Virginia

**6.) What is the place you have visited and enjoyed the most?**

Florence

**7.) Biggest pet peeve?**

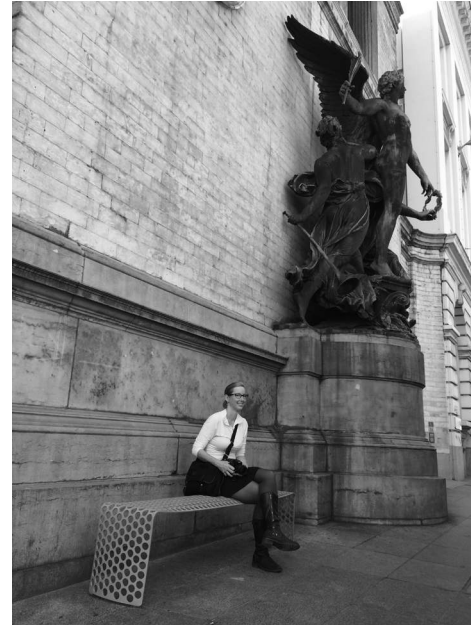
The phrase "Highest and Best Use". Highest and Best according to whom?! The greatest monetization of a property often ignores the cultural and historical value to a community.

**8.) What would your superhero power be?**

Infusing people with Peace and Love by smiling.

**9.) Favorite local restaurant?**

Chez Foushee



**10.) Proudest moment?**

Getting my license is high up there, but also starting the Historic Preservation Studio at Glavé & Holmes in January 2020.

**11.) What Committee(s) are you on?**

Public Relations - supporting The Pedestal since 2017!



## FEATURED PROJECT



Originally founded in 1996 as a public-private partnership, VCU's College of Engineering — once a School — has flourished into a regional and national powerhouse. Enrolling nearly 1,800 undergraduate and over 300 graduate students, the College offers degrees in biomedical engineering, chemical and life science engineering, computer engineering, computer science, electrical engineering, mechanical engineering, and nuclear engineering, mechanical engineering, and, in conjunction with the adjacent School of Business, a master's degree in computer and information systems security.

With an ambitious vision for funded research and recognition as a Top 50 engineering school, VCU engaged Baskervill and Goody Clancy in a comprehensive 2015 programming and planning study for a new Engineering Research Building. The need for a new research building grew out of the College's 2013 Strategic Plan and the University Master Plan, which provided for an expansion adjacent to the existing Engineering East building along the Cary Street corridor. In 2016, Baskervill and Goody Clancy were selected as the design team to bring the Engineering Research Building to life.

The Engineering Research Building (ERB) design was conceived as a balance of two simultaneous goals: first, creating a vibrant, flexible, forward-thinking home for the College of Engineering's Innovation Center, research labs, and specialized facilities; and second, completing the building assemblage already established by Engineering East and the School of Business in a consistent, compatible architectural vocabulary of traditional red brick and cast stone. The Collaboration Hub—the social heart of the complex and its most intensely used space—is designed to knit together the three buildings in an open, light-filled space, encouraging interaction across disciplines.

The building itself is a testament to modern engineering, achieving LEED Silver certification. A priority for the University and the design team—including engineers from BR+A and lab planners from Page/SST—was creating high-performance lab spaces that made use of fewer resources. With a focus on energy use and carbon reduction, the team incorporated highly-efficient mechanical systems, employing demand-control ventilation, chilled beams, and a heat recovery chiller in the lab spaces to reduce needless airflow and prevent heat loss. Occupancy sensors and use of natural light help mitigate overall energy consumption.

Unveiled in February 2021, the four-story, 133,000-square-foot Engineering Research Building significantly expands the college's laboratory capacity for advanced research. Its specialized workspaces, including the Innovation Maker



Facility, are equipped with resources for hands-on prototyping and experiential learning, all meant to reflect the real-world impacts of leading-edge engineering on commerce and the human experience. The building also allows VCU Engineering students to collaborate closely with industry partners on translational research—among them: cutting-edge entities focused in biomedical and pharmaceutical manufacturing, to cybersecurity, renewable energy, and much more. The building earned LEED Silver certification.



# FEATURED PROJECT

*College of Engineering Research Building  
Virginia Commonwealth University  
401 W Main Street  
Richmond, VA 23284*

Executive Architect: Baskervill  
Design Architect: Goody Clancy  
Consulting Architect: Smith + McClane

Jay Woodburn, AIA, LEED AP  
Principal-in-Charge, Baskervill

Ashley N. Jones, AIA, LEED AP BD+C  
Project Manager, Baskervill  
Jefferson Poole, AIA  
Design Architect, Goody Clancy

Matthew Marsili, NCIDQ  
Interior Designer, Baskervill

Contractor:  
Kjellstrom & Lee

Lab Planning:  
Page

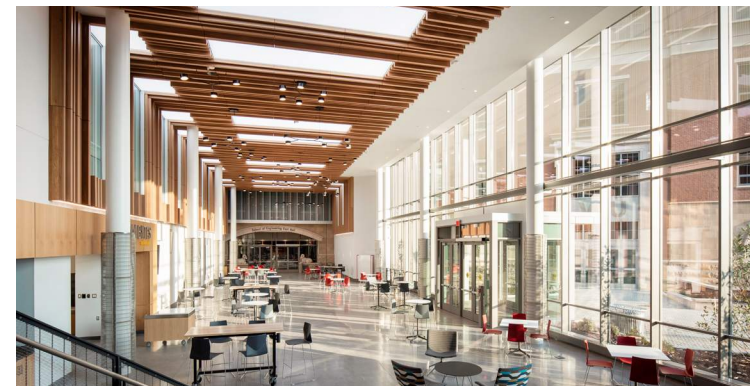
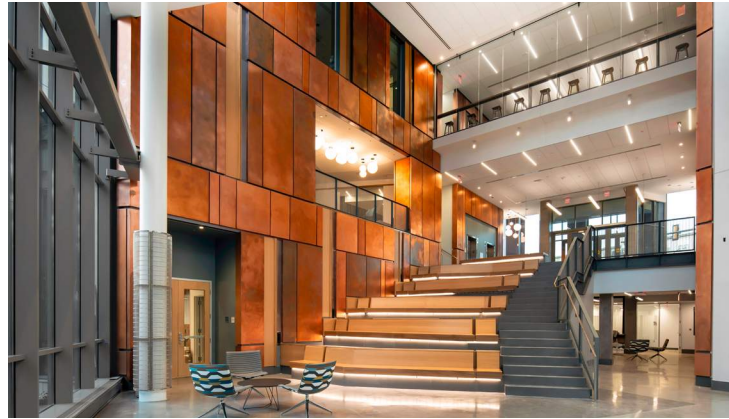
Civil Engineer:  
Draper Aden Associates

Structural Engineer:  
Dunbar Milby Williams Pittman & Vaughan

MEP Engineer:  
BR+A

Sustainability Consultant:  
SDC  
Rebecca Aarons-Sydnor, Assoc. AIA

<https://www.baskervill.com>





# SPORTING CLAY EVENT



The 3rd Annual AIA Richmond Sporting Clays Challenge was held on May 24th at Old Forge Sporting Clays in Providence Forge. 52 shooters were on the roster and the weather could not have been better! The format for the event provided all AIA Members, Allied Members, and industry partners the opportunity for some much needed networking and fellowship.

This event helps fund AIA Richmond's K-12 Program and provides funds for the AIA Richmond Scholarship fund. To date, we raised \$2500 for those two endeavors. The shooters teamed up after a safety briefing by Jim Snowa, proceeded to shoot 100 clays in three types of scenarios. 5 stand, Wobble and 8 Sporting Clays stations. The competitors were shooting for prizes, gift cards and trophies (and bragging rights).

This year the Experts were separated from the Novices into 4 classes in which the winners were as follows:

A Class - Hunter Napier  
B Class - Willie Harris  
C Class - Charlie Kreye  
D Class - Ian Smith

Winners of each class received a \$25 Green Top Gift Card, 2 boxes of Shells and a hand turned walnut "sporting clay bird".

As an extra incentive, we also featured a prize table. Funded by sponsors, each participant put their score card in a drawing for valuable prizes in which they selected from. Prizes ranged from a half day hunt at a game preserve, gift cards, top shelf bourbon & wine, free rounds of sporting clays and gift certificates for personal instruction at Old Forge. Every participant left with a prize from the table.

For his help and work for the event, Jim Snowa AIA was recognized with a special walnut bird by the committee. He has worked with the group from inception and his willingness to provide the safety briefing and be the Range Safety Officer is invaluable. We appreciate his expertise!

Save the date, May 23, 2022, The 4th Annual AIA Richmond Sporting Clays Challenge! See you there!



We would like to thank our SPONSORS We could not raise these funds without their generous support:

AIA Annual Bronze Sponsor: [Azek](#)

Hydration Cart: [Dunlap Partners](#) & [W. M Jordan Company](#)

Prize Table: [Quinn Evans Architects](#), [Lighting Enterprises](#), [Old Forge Sporting Clays](#) & George Hensley.

Mask Sponsor: [Kahler Slater](#)

Traps: [Pace Collaborative](#), [Nichiha](#), [Keystone](#), [Poole & Poole Architecture](#), [Lighting Enterprises](#).

Lunch: [Draper Aden Associates](#) & [Rockfon](#).

# MEMBER NEWS



## NEW ARCHITECT

We understand the dedication and effort required to study for and pass the ARE. Congratulations to **Jacob Bushmire, AIA** for passing his exams and gaining licensure. This is great news that thrills all of us and we are so proud to call you an architect!

## NEW AIA RVA MEMBERS

We are always excited to welcome new members to Virginia. The following members recently joined the ranks of AIA Richmond.

### New Architect Members

Mr. Matson L. Roberts Jr., AIA

### New Associate Members

Mr. John C. Thomas Jr., Associate AIA  
Miss Nicole W. Gallini, Associate AIA  
Mr. Alex Haley, Associate AIA

## SMBW 30TH YEAR ANNIVERSARY

2021 marks 30 years since SMBW opened its doors to bring clients progressive designs with exceptional customer service. In 1991, SMBW's four founding partners shook hands in booth 7 at Perly's Restaurant to form the practice. In the intervening years, SMBW has grown from a four person can-do practice to one of the Mid-Atlantic's signature design firms.

## 2021 BMAD DESIGN BUILD CHALLENGE - "HELPER"

"Helper" will live at the courtyard of the Branch Museum of Architecture and Design on Monument Avenue through this fall.

The "Helper" design aims to address wasted materials by highlighting human's impact on the natural world. By creating two different experiences from inside to the outside through all sensations, occupants cannot disregard the sharp ends of the abandoned materials used and, thus, must acknowledge the life cycle of wood, as well as any materials human consumes. The sticks point to countless places that resonate with visitors.

An Liu, a.k.a. Sledge, is a concept-driven designer at SMBW Architects and an adjunct faculty at the Department of Interior Design at VCUarts. As a VCUarts mOb studio alumni, An's design solutions continuously acknowledge environmental and social impacts.

<https://branchmuseum.org/helper/>



## 2021 SCHOLARSHIP RECIPIENTS



### SARINA DEPALMA

#### **High School:**

Collegiate School

#### **College:**

The University of Tennessee

#### **Activities and Interests:**

Co-President: John Maloney Project

President: RAMPS Club

Lebone Leadership Conference in South Africa

Junior Ambassador: International Emerging Leaderships Conference  
Varsity Tennis

#### **Architectural Achievements:**

Highschool Courses

Summer Intensive at Virginia Tech

Externship for local architecture firm



### PRANAY VITTAL

#### **High School:**

Godwin High School

#### **College:**

The University of Southern California

#### **Activities and Interests:**

FIRST Robotics

Water Polo

#### **Architectural Achievements:**

Technical Drawing & Design

Architectural Drawing & Design



# MEMBER NEWS



## BASKERVILL 2021 PROMOTIONS

Congratulations to these two new associates and one new principal in the Richmond office!

**Eric Haley, PE, CEM** is a mechanical engineer by education and training. A licensed professional engineer in five states, Eric brings nearly 20 years of experience to his role leading Baskervill's engineering team as a new principal.

**Brandon Hairston** is Baskervill's Director of IT Operations. With over 15 years of IT experience, Brandon joined the firm in 2011 as an IT Specialist and now leads the firm's IT department which supports four offices and over 125 users.

**Lynden Garland, AIA, LEED AP, CDT** leads Baskervill's healthcare studio. With over 20 years of experience as an architect across multiple specialties, Lynden uses his diverse background to achieve long-lasting relationships and stronger projects.

## 2021 AIA RICHMOND BOARD MEMBER NEEDED!

Are you interested in a more active role with AIA Richmond and your community? Consider serving on the AIA Richmond Board of Directors. We are actively seeking a full AIA member or an AIA Associate member as a 2021 Director. For more information or to apply, contact: [info@aiarva.org](mailto:info@aiarva.org)

## SPONSORSHIP OPPORTUNITIES

Become an AIA Richmond Supporter! Information on becoming a Design Firm Sponsor, Allied Member Sponsor, or a Single Event or Committee Sponsor is available at: <https://aiarva.org/membership/become-an-aia-richmond-supporter/>

CHECK OUT OUR NEW WEBISTE AT [WWW.AIARVA.ORG](http://WWW.AIARVA.ORG)!

## ROBERT COMET, JR., RETIRES AFTER 40+ YEAR DISTINGUISHED ARCHITECTURAL CAREER

A 2002 recipient of the Distinguished Achievement Award from the AIA, Comet spent his entire career based in Richmond where he oversaw dozens of high-profile planning and design projects for school systems, local and state government agencies, churches, and non-profit organizations. A founding partner of BCWH Architects, he served as president of the firm until it merged with Quinn Evans in late 2018.

He has completed challenging restoration and historic preservation projects at landmark properties as the Virginia State Capitol, the Virginia War Memorial, Hollywood Cemetery, the Science Museum of Virginia, and the Maggie L. Walker Governor's School for Government and International Relations.

Comet has completed numerous school and office design, expansion, and renovation projects.



Comet holds a Master of Architecture (1979) from the University of Michigan and a BS in Architecture from the University of Virginia (1976). He is a member of the AIA and a LEED Accredited.

"Rob's career has had an incredible impact on Richmond and communities across the Commonwealth of Virginia," says Charles Piper, AIA, LEED AP, a principal with Quinn Evans.

"He has modeled genuine servant leadership in our company and been active in the growth and development of so many of his colleagues. His leadership is also evident in his service to school and government clients and in the extraordinary commitments he has made in serving and guiding a host of critical civic and non-profit organizations."

## SEND US YOUR NEWS:

Have news to share with your AIA Richmond community? Please send your news to the Public Relations Committee: [Luis@sustaindesign.net](mailto:Luis@sustaindesign.net)

## COVER PHOTO / SKETCH SUBMISSIONS:

We're always looking to share artistic images made by members on the newsletter cover! Submit images to Luis at the address above.

[www.aiarva.org](http://www.aiarva.org)

[www.facebook.com/aiarichmond](https://www.facebook.com/aiarichmond)

[www.twitter.com/aiarva](https://www.twitter.com/aiarva)

[www.instagram.com/aiarichmond/](https://www.instagram.com/aiarichmond/)

[#aia\\_richmond](https://www.instagram.com/aiarichmond/)



# BOARD OF DIRECTORS



President  
Mayda V. Colón, AIA  
HKS  
Community & Government Affairs, K-12



Director  
Ryan Alkire, AIA  
Wendel Companies  
YAF, K-12



Director  
Christine Snetter, AIA  
Jefferson Lab  
Professional Development



First Vice President/President Elect  
Taylor Clark, AIA  
SMBW  
Professional Development



Director  
Ashleigh Brewer, Associate AIA  
Johannas Design Group  
Richmond Women in Design (RWiD)



Director  
Cody Solbert, Associate AIA  
VMDO  
YAF



Immediate Past President  
Nicholas J. Cooper, AIA  
HKS  
YAF, Community & Government Affairs



Director  
Kendall Nicholson, Assoc. AIA, Ed. D.  
Regent University  
K-12



Director  
Robert Parise, AIA  
Glave & Holmes



Secretary  
Patrick Thompson, Associate AIA  
Commonwealth Architects  
Community & Government Affairs,  
Allied Membership



Director  
Forest Frazier, AIA  
Architecture AF



Allied Director  
Jeff Nelson  
Draper Aden Associates  
Allied Membership



Treasurer  
Nea Poole, AIA  
Poole & Poole Architecture  
Public Relations



Director  
Jonah Margarella, AIA  
Baskervill  
Allied Membership



Executive Director  
Rhea George, Hon. AIA Virginia  
AIA Virginia

## INTERESTED IN SERVING ON A COMMITTEE?

Contact [info@aiarva.org](mailto:info@aiarva.org) regarding the committee in which you are interested!